

## SPECIFICATIONS

<b>Signal Tracking</b>	
Channels	440 channels
GPS	L1 C/A, L2C, L2P, L5
BeiDou	B1, B2, B3
GLONASS	L1C/A,L1P, L2C/A,L2P
Galileo	E1, E5a, E5b
QZSS	Reserved
SBAS	WAAS, EGNOS, MSAS, GAGAN
<b>Performance Specifications</b>	
Cold start	<50s
Warm start	<45s
Hot start	<15s
RTK Initialization time	typically <10s
Signal reacquisition	<1.5s
Initialization reliability	typically>99.9%
<b>Positioning Specifications</b>	
Post Processing	2.5 mm+1 ppm Horizontal 5 mm+1 ppm Vertical
Single Baseline RTK	8 mm + 1 ppm Horizontal 15 mm + 1 ppm Vertical
E-RTK (<100km)	0.2m + 1 ppm Horizontal 0.4m + 1 ppm Vertical
DGPS	<0.4 m 3D RMS
SBAS	1 m 3D RMS
Standalone	1.5 m 3D RMS
<b>Communications</b>	
I/O port	5-pin LEMO external power port +RS232 7-pin LEMO RS232 + USB 1 network/radio data link antenna port SIM card slot
Radio	Integrated internal radio 1W/2W/3W External radio 5W/35W 410-470MHz Trimtalk450s, TrimMark3, PCC EOT, SOUTH
Cellular	WCDMA, GPRS/EDGE, CDMA2000/EVDO
Bluetooth	BLEBluetooth 4.0, Bluetooth 2.1+EDR standard
NFC (Optional)	Realizing close range (<10cm) automatic pair
<b>Data Format</b>	
Correction data I/O	RTCM 2.X, 3.X, CMR(GPS only), CMR+(GPS only)
Position data output	-ASCII: NMEA-0183 GSV, RMC, HDT, VHD, GGA, GSA, ZDA, VTG, GST; PTNL, PJK PTNL, AVR PTNL, GGK
Network protocol	VRS, FKP, MAC, supporting NTRIP protocol
<b>Environmental</b>	
Working temperature	-40°C to +80°C
Storage temperature	-55°C to +95°C
Humidity	95% no condensation
Weight	970g
Waterproof	IP67
Shock and Vibration	withstand 2m pole drop onto the cement ground naturally
<b>Electrical</b>	
Power consumption	2W
Memory	8 GB

**SOUTH**  
Target your success

# GALAXY G1c

Cost-effective, versatile, portable



- GPS | GLONASS | BEIDOU | GALILEO
- 8GB MASS STORAGE
- SOUTH, TRIMTALK PROTOCOLS
- BLUETOOTH 4.0 | NFC CHIP

**SOUTH**  
Target your success

### SOUTH SURVEYING & MAPPING TECHNOLOGY CO., LTD.

Add: South Geo-information Industrial Park, No. 39 Si Cheng Road, Tian He IBD, Guangzhou 510663, China  
Tel: +86-20-23380888 Fax: +86-20-23380800  
E-mail: mail@southsurvey.com export@southsurvey.com impexp@southsurvey.com gnss@southsurvey.com  
http://www.southinstrument.com http://www.southsurvey.com

G1 c inherits almost all of advanced features from G1, so it's more cost-effective, power-saving. G1 c GNSS mainboard supports GPS, GLONASS, Beidou, also Galileo constellation.

## STRUCTURE



- 1. Bluetooth indicator
- 2. DATA interaction
- 3. Satellite indicator

- 4. Power key
- 5. Battery housing
- 6. Loudspeaker

- 7. UHF/GSM antenna interface
- 8. Standard LEMO(5 pins)
- 9. USB/RS232

## KEY FEATURES



### Powerful new bluetooth module

Equipped with bluetooth 4.0 module, which supports receiver to work well with smartphone and tablet etc, also making bluetooth communication faster and more stable.



### Full satellite constellations support

Equipped with most advanced GNSS boards, SOUTH Galaxy G1 c system can track most signal from all kinds of running satellite constellation, support B1, B2, B3 signal from BeiDou, and E1, E5a, E5b signal from Galileo.



### NFC function

The internal NFC module can make the complicated bluetooth communication more simple and easier.



### Advanced data-link module

Integrated with new and excellent datalink system, SOUTH Galaxy G1 c is compatible with current radio protocols in the market, also supports all kinds of network types to access CORS seamlessly.

## CONTROLLERS



### X11 Pro

- 72 channels all-in-vien tracking, L1 C/A
- Windows Mobile 6.5
- AM335X 1GHz CPU
- 5MP integrated camera
- 3.5G network module
- 8G mass storage



### S720

- Windows Mobile 6.5
- Cortex A8, 1GHz
- 512M RAM
- 16G mass storage
- IP65



### T17

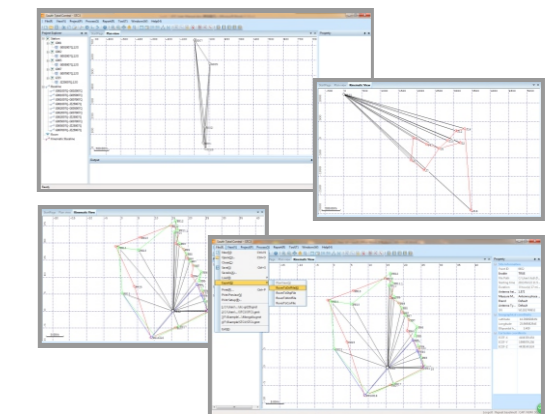
- Windows Mobile 6.5
- 806MHz processor
- 512M RAM
- 3.7 inch screen
- 167 channels, GPS (L1), BD (B1)
- IP65

## SOFTWARE

STC is a new post-processing software that integrates static data processing and kinematic adjustment

- Antenna manager with popular receiver types
- Compatible with numerous data format
- Update online
- Abundant report exporting
- Fast processing and clear display
- Transformable to RINEX format
- Full options for result Export
- Powerful baseline settings
- Manually edit and filter satellite data for best result

### SOUTH Total Control Software



### Field Software



Field Genius is a powerful survey data collection software from Canada. Advanced Roading, Surfacing, Slope Staking, Code Free Linework, Smart Points and GPS support and Live Graphics make FieldGenius the choice of organizations that value productivity. Multi-language is available, which already supported all of South GPS models. (Need to purchase individually)